

# COOL-LITE XTREME

## 70/33 & 70/33 II

Solar Control Glass

ENJOY UNEXPECTED  
TRANSPARENCY



BUILDING GLASS EUROPE

SAINT-GOBAIN

## CONTROLLING THE SUN HEAT WITHOUT SACRIFICING THE SUNLIGHT

Where would today's architecture be without glass?  
It enables incredible creativity, inviting natural light inside  
and creating a visual connection with the outside.  
But too often it has come at the expense of aesthetics,  
due to tinted coatings ; or as a compromise to the comfort  
of occupants when the sun overheats the facade.  
Why should we choose between daylight, thermal comfort  
and aesthetics? With **COOL-LITE XTREME 70/33 & 70/33 II**,  
a unique solution is here.



# COOL-LITE XTREME 70/33 & 70/33 II

## CLEARLY GETTING THE BALANCE RIGHT BETWEEN SOLAR HEAT AND LIGHT



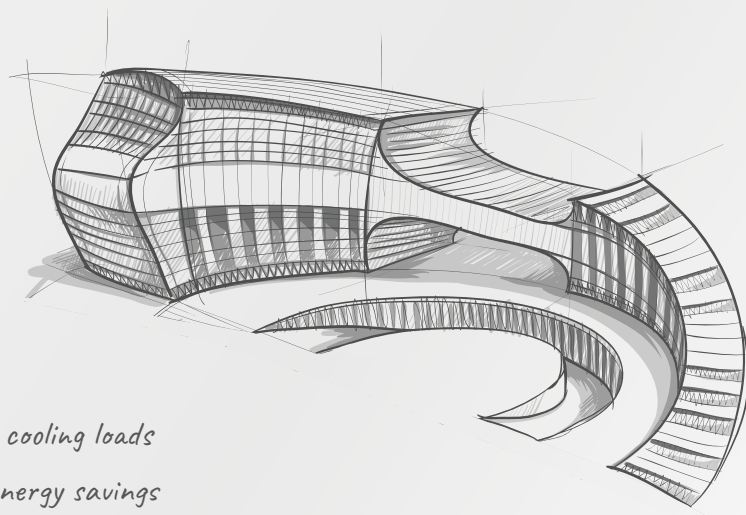
No other high performance solar control glazing is as neutral and transparent as this. Double glazing with COOL-LITE XTREME 70/33 or 70/33 II brings ample natural light into your building, (offering an incredible 70% of light transmission) while blocking two thirds of solar heat. It delivers an outstanding ratio between daylight and solar heat protection (with a selectivity of 2,12!).

So building occupants can benefit from generous daylight, while minimizing discomfort from overheating in summer. The energy consumption for air conditioning and artificial light can be significantly cut. Heating costs in winter are also reduced, as COOL-LITE XTREME 70/33 and 70/33 II have the lowest possible heat loss coefficient for double glazing today. Those with an eye on design will appreciate an extremely high level of clarity without distortion of colors from inside or out.

### HIGH PERFORMANCE, HIGHER THAN EXPECTATIONS

#### ADVANTAGES

- High level of transparency and neutral aesthetics in transmission, and both in internal and external reflections
- High light transmission (70%) or maximum daylight
- Low solar factor (0,33) for reduced cooling loads
- Low  $U_g$  ( $1.0 \text{ W/m}^2 \cdot \text{K}$ ) for heating energy savings



#### BENEFITS



Day light-comfort



Energy-saving



Summer-comfort



Winter-comfort



Design



# COOL-LITE XTREME 70/33 & 70/33 II

## THE LATEST TECHNOLOGY FOR THE LATEST ARCHITECTURAL TRENDS

**Extreme colour neutrality and transparency are “in”. Compromises are “out”!**

With COOL-LITE XTREME 70/33 and 70/33 II, your project benefits from the latest innovation in high performance solar control coatings. These triple silver coatings are applied to PLANICLEAR or DIAMANT by cathodic sputtering under vacuum conditions.

They offer the most neutral aesthetics and highest level of transparency with outstanding performances on annealed or “to-be-tempered” glass.

The selectivity achieved is 2.12. **A beautifully clear breakthrough.**

### Compare the performance, admire the end result

Overview of the whole COOL-LITE XTREME range.

SPECTROPHOTOMETRIC PROPERTIES:	DGU 6/16/4 ALL PLANICLEAR WITH					
	COOL-LITE XTREME 70/33 & 70/33 II		COOL-LITE XTREME 60/28 & 60/28 II		COOL-LITE XTREME 50/22 II	
LIGHT TRANSMISSION LT	70%	71%	60%	61%	47%	48%
EXTERNAL LIGHT REFLECTION (LRE)	11%	11%	14%	14%	16%	16%
INTERNAL LIGHT REFLECTION (LRI)	13%	13%	17%	17%	18%	18%
SOLAR FACTOR G (EN 410)	0.33	0.33	0.28	0.28	0.21	0.21
Ug (W/m <sup>2</sup> .K)	1.0	1.0	1.0	1.0	1.0	1.0

■ WITH DGU 6/16/4 ALL PLANICLEAR ■ WITH DGU 6/16/4 ALL DIAMANT

## PRODUCT RANGE

Two versions of the product are available to adapt to all requirements for security in facades:

- XTREME 70/33 for annealed glass
- XTREME 70/33 II for tempered glass

SIZE AND THICKNESS	STANDARD	ON DEMAND
SIZE	6,000 mm x 3,210 mm	up to 18,000 x 3,210 mm
THICKNESS	6 mm, 8 mm	4, 10, 12 mm



## PROCESSING CAPABILITIES

For optimum performances and aesthetics, the following instructions are to be observed:

**Thermal treatment:** XTREME 70/33 II is delivered with EasyPro and must always be tempered or heat-strengthened before assembly into a double or triple glazed unit. XTREME 70/33 must be used annealed and assembled into double or triple glazed unit.

**Lamination:** both can be laminated, the coating not being in contact with the PVB layer. (note: XT 70/33 II must be heat treated before lamination)

**Other:** both versions of the coating must be edge deleted and should be positioned on face 2 of a double or triple glazing unit.

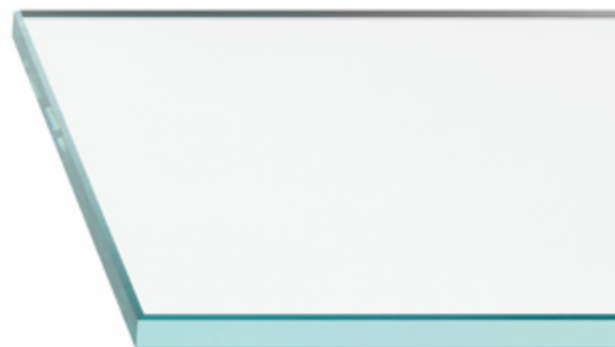
TGU 6/14AR/4/14AR/4	
XTREME POSITION #2 PLANITHERM XN POSITION #5	
63%	65%
13%	13%
16%	16%
0.31	0.31
0.6	0.6

■ BASE GLASS PLANICLEAR

■ BASE GLASS DIAMANT

## SUBSTRATES

COOL-LITE XTREME 70/33 & 70/33 II are available on PLANICLEAR substrate. DIAMANT substrate can be used for extra clarity and additional wow effect! Available on demand.





# COOL-LITE XTREME 70/33 & 70/33 II

---

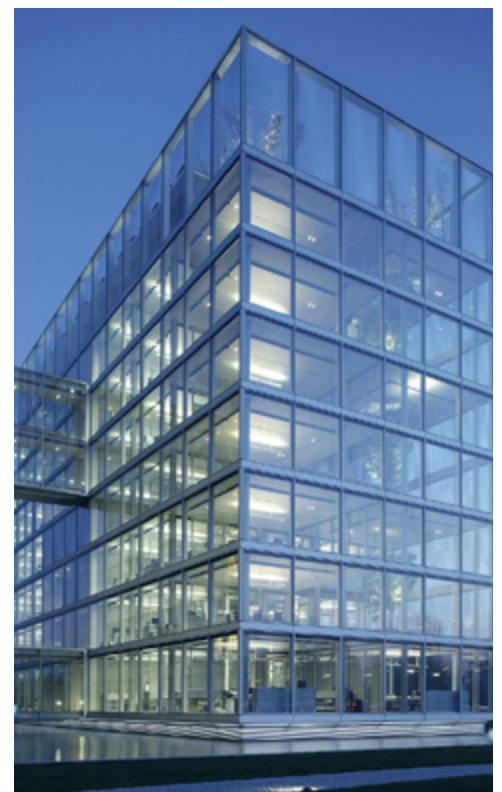
## SO MANY PLACES WHERE THE RIGHT CHOICE WILL TRULY SHINE

---

COOL-LITE XTREME 70/33 & 70/33 II feature extremely **transparent** and **selective solar control coating** for use in **high-end commercial buildings**, when maximum daylight income and **optimum indoor thermal comfort** are desired. **More natural daylight indoors** translates into **improving the mood, health and productivity** of the people who live or work there.

### OFFICES

It can significantly reduce solar heat gain in offices featuring large glazed facades.



## HEALTHCARE

It maximises incoming daylight for optimum health and well-being.



## EDUCATION

It increases indoor comfort for effective learning environments.



## OTHER PUBLIC SPACES

It creates welcoming spaces ideal to admire art work or enhance shopping experience.



## SAINT-GOBAIN BUILDING GLASS EUROPE

[www.saint-gobain-facade-glass.com](http://www.saint-gobain-facade-glass.com)  
[www.glassolutions.ee/et](http://www.glassolutions.ee/et)  
[www.glassolutions.se/sv](http://www.glassolutions.se/sv)



@SaintGobainBuildingGlassEurope



Saint-Gobain



@saintgobain

"Ready to make  
the most of  
your space?"

